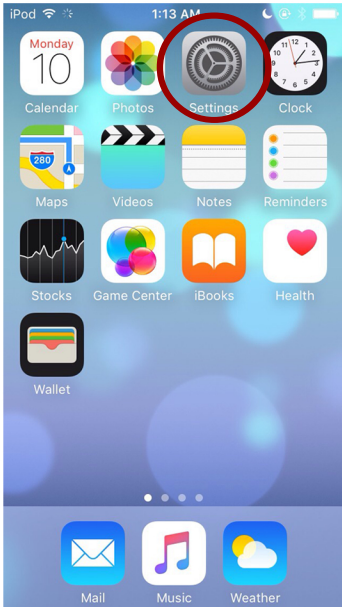


APPLE iOS 12 PARENTAL CONTROLS & MONITORING

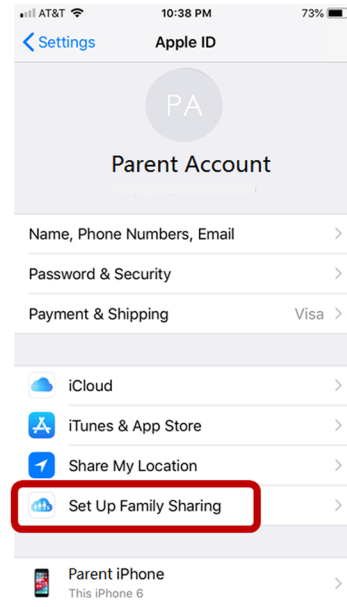
Step 1: SETTINGS



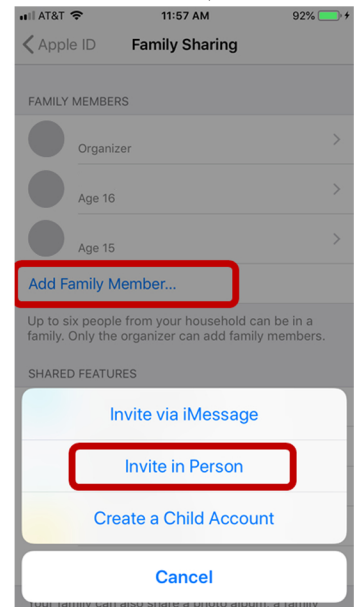
Step 2: YOUR ACCOUNT



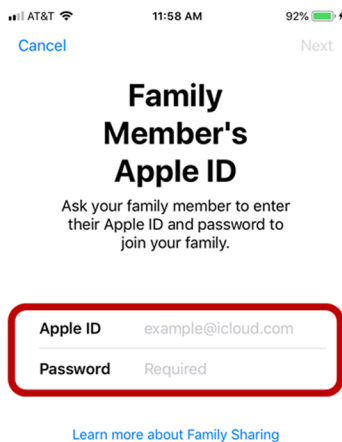
Step 3: SET UP FAMILY SHARING



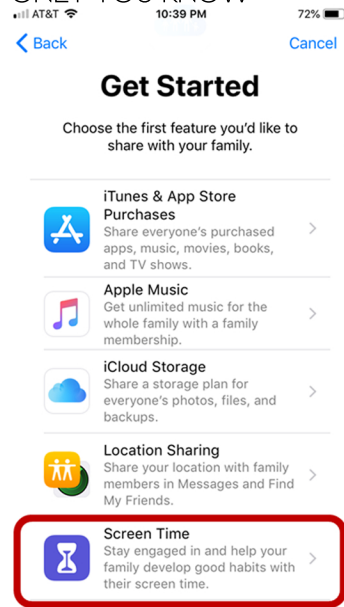
Step 4: ADD FAMILY MEMBER (in person)



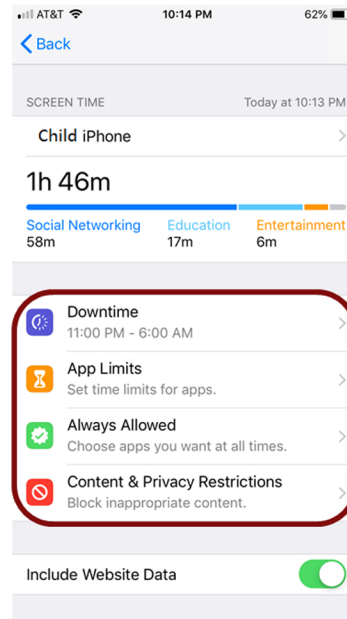
Step 5: EACH PERSON MUST HAVE THEIR OWN



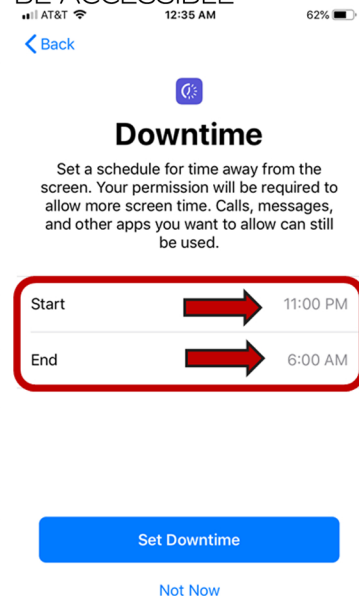
Step 6: SCREEN TIME USE 4-DIGIT PASSWORD ONLY YOU KNOW



Step 7: FOUR CATEGORIES OF LIMITS

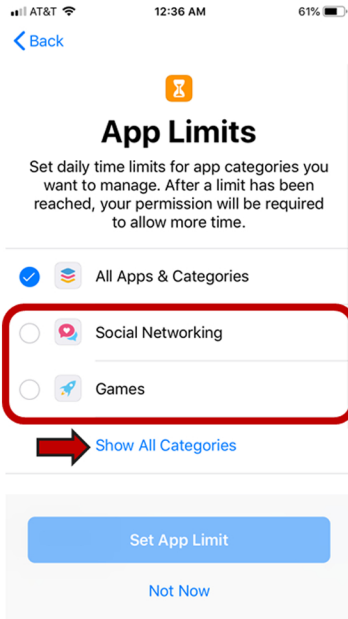


DOWNTIME: WHEN APPS WILL NOT BE ACCESSIBLE

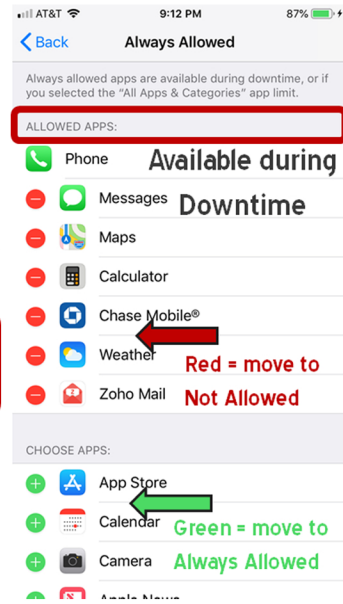


APPLE iOS 12 PARENTAL CONTROLS & MONITORING

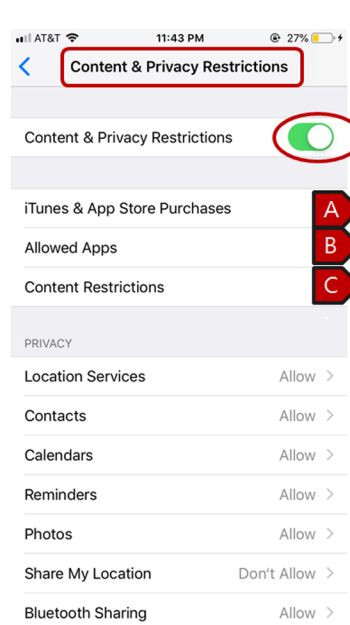
APP LIMITS:
CUSTOMIZE DAYS/TIME ALLOWED FOR APPS



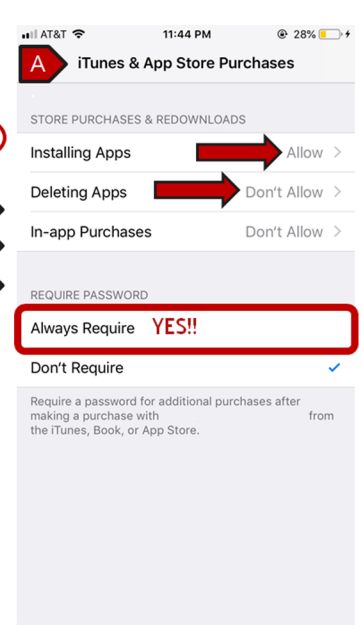
ALWAYS ALLOWED:
APPS WILL NOT BE AFFECTED BY DOWNTIME



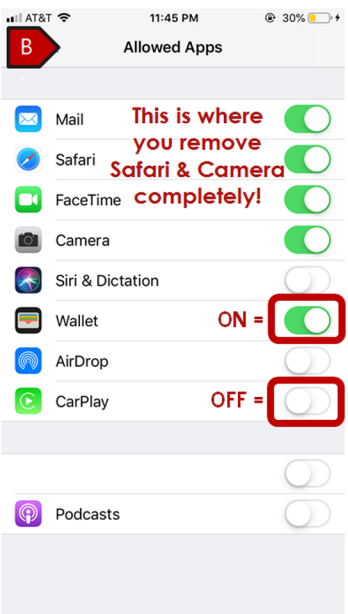
CONTENT & PRIVACY RESTRICTIONS:
[SEE A, B, AND C]



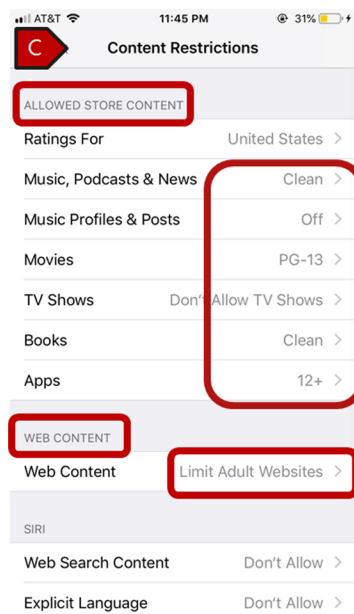
[A] TURN OFF INSTALLING APPS TO DISABLE CLOUD DOWNLOADS



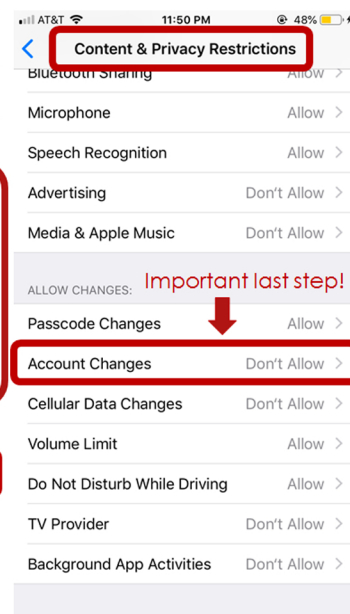
[B] COMPLETELY REMOVE APPS FROM USE



[C] SET AGE-APPROPRIATE CONTENT LIMITS



STEP 8: DON'T ALLOW ACCOUNT CHANGES



STEP 9: MONITOR USE/MODIFY LIMITS FROM PARENT'S PHONE

